

Matthiola Opera Series

(*Matthiola incana*)

Cut Flowers Culture (revised 02/25/21)

Opera is a seedling selectable type matthiola, resulting in maximum yield. It is best for production under moderate temperatures and light levels.

General Information

| Cultivation Type | Usage | Stem Length | Timing Group |
|--------------------|-------|-------------------|--------------|
| Greenhouse, Tunnel | Line | 32 in. (81 cm) | 2 |

Germination

| Seed Form | Recommended Plug Size | Seeds/Cell | Plug Crop Weeks | Days from 50% to maximum germination | Initial Media pH/EC (1:2) | Cover Seed |
|-----------|-----------------------|------------|-----------------|--------------------------------------|----------------------------|------------|
| RAW | 288 | 1 | 5-6 | 2-4 | 5.6-5.9 pH 0.5 mmhos/cm | Yes |

Plug Production

| | Stage 1 | Stage 2 | Stage 3 | Stage 4 |
|--------------------|---|---|---|---|
| Moisture | Level 4 | Level 3-4 | Level 2-3 | Level 1-2 |
| Temperature | 59-64°F (15-18°C) | 59-64°F (15-18°C) | 59-64°F (15-18°C) | 59-64°F (15-18°C) |
| Light | Optional | 1,500-2,500 f.c. (16,100-26,900 Lux) | 1,500-2,500 f.c. (16,100-26,900 Lux) | 2,500-5,000 f.c. (26,900-53,800 Lux) |
| Fertiliser | Less than 100 ppm N (Less than 0.7 EC) | Less than 100 ppm N (Less than 0.7 EC) | 100 to 175 ppm N (0.7 to 1.2 EC) | 100 to 175 ppm N (0.7 to 1.2 EC) |

Propagation Key Tips

Double-flowering matthiola may be selected from single-flowering types by exposing seedlings with fully expanded cotyledons to 41°F (5°C) for approximately 3 to 5 days. At this point, seedlings of double-flowering plants will appear a pale green, while singles remain dark green. After removal from cold treatment, double-flowering seedlings will appear yellow and chlorotic within 1 to 2 days, while single-flowering seedlings remain robust and green. This cold treatment may only be done once to selectable matthiola plugs.

Growing on to Finish

| Target Media pH/EC (1:2) | Fertiliser | Daylength |
|--------------------------------|-------------------------------------|-----------|
| 5.8-6.5 pH 1.5-2.0 mmhos/cm | 100 to 175 ppm N (0.7 to 1.2 EC) | - |

Crop Scheduling

| Cultivation Type | Support | Temperature | Density | Crop Time |
|------------------|-------------|---|----------------------------------|------------|
| Greenhouse | Recommended | 16-18°C/60-65°F (day) 13-16°C/55-60°F (night) | 6-7 plants/ft² (65-75 plants/m²) | 9-11 weeks |

Common Problems

To protect against root problems, it's recommended to sterilize (steam or other) the soil after the first crop if several crops will be grown in the same soil over the year. Matthiola is sensitive to Fusarium.

Finishing Key Tips

Double-flowering matthiola may be selected from single-flowering types by exposing seedlings with fully expanded cotyledons to 41°F (5°C) for approximately 3 to 5 days. At this point, seedlings of double-flowering plants will appear a pale green, while singles remain dark green. After removal from cold treatment, double-flowering seedlings will appear yellow and chlorotic within 1 to 2 days, while single-flowering seedlings remain robust and green. This cold treatment may only be done once to selectable matthiola plugs.

Harvest

Harvest when 3-5 florets have opened.

Post Harvest

Matthiola are sensitive to ethylene; it is recommended to treat with an ethylene-inhibiting product. Hydrate and store in a cooler at 1-3°C (34-38°F) in commercial floral holding solution at the manufacturer recommended rates.

Vase Life

5-8 days

NOTE: Growers should use the information presented here as guidelines only. PanAmerican Seed recommends that growers conduct a trial of products under their own conditions. Crop times will vary depending on the climate, location, time of year, and greenhouse environmental conditions. It is the responsibility of the grower to confirm the treatment is available in their region as well as read and follow all the current label directions relating to the products. Nothing herein shall be deemed a warranty or guaranty by PanAmerican Seed of any products listed herein. PanAmerican Seed's terms and conditions of sale shall apply to all products listed herein.

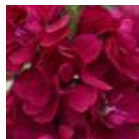
Variety Pictures



Debora



Fedora



Francesca



PanAmerican Seed Co.
622 Town Road, West Chicago, Illinois, USA, 60185
+1 800-231-7065 PanAmSeed.com

™ denotes a trademark of and ® denotes a registered trademark of Ball Horticultural Company in the US. It may also be registered in other countries.
©2024 Ball Horticultural Company