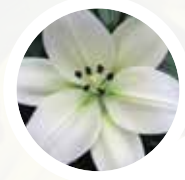




BALL SEED® BULB & PERENNIAL ORDERING GUIDE



Ball Seed is committed to serving your needs – and that means having the products you want, when you want them, in the quantities you need to fill your benches.

This guide indicates the ideal ordering windows to ensure the best availability of varieties and quantities for key products based on season. Your Ball Seed sales representative will work with you to find the best possible solution for your needs, no matter when you order.

BULB CROP	PRIME ORDER WINDOW	CROP SHIPPED
AMARYLLIS	February to May	September to April
ANEMONES	April to June	August to March
CALLAS	April to August	Year-Round
DAHLIAS	June to September	Mid-January to June
DUTCH FLOWER BULBS		
Allium, Crocus, Daffodils, Hyacinths, Iris, Muscari, Narcissi, Tulips	February to May	September to December
9C. Programmed Daffodils, Narcissi, Tulips	February to May	Mid-October to December
5C. Programmed Tulips	February to May	November to February
Greenhouse Iris	February to May	October to March
LILIES - LONGIFLORUM (EASTER)	May to July	October to December
LILIES - DUTCH HYBRIDS except Orientals	April to August	Year-Round
LILIES - DUTCH ORIENTAL	April to August	January to November
LILIES - SOUTHERN HEMISPHERE	April to August	October to April
OXALIS	March to September	November to April
PAPERWHITES	February to May	October to February
RANUNCULUS		
Butterfly	April to June	September to February
All Others	April to June	August to February
PEONIES - FALL	April to July	October to November
PERENNIALS - Barerooted	May to August	(November) Spring

Contact your Ball Seed sales representative, visit ballseed.com or call 800 879-BALL for more information.

