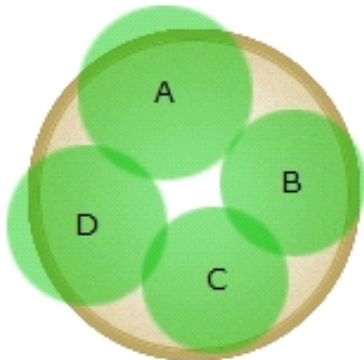


Brighten Your Shade

For those partial shade locations, brightening up the space with chartreuse plants captures the light. They compliment reds and hot pinks very well, too.



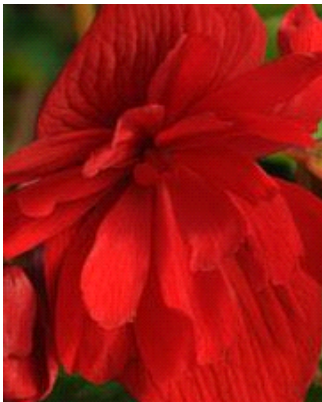
12-14 in.
container



Warm Season

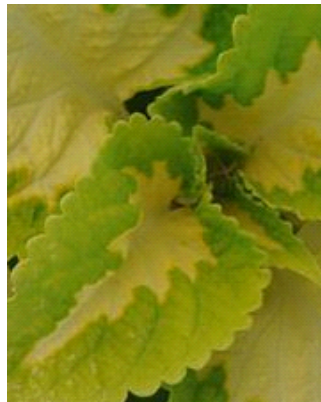


Plants in Container



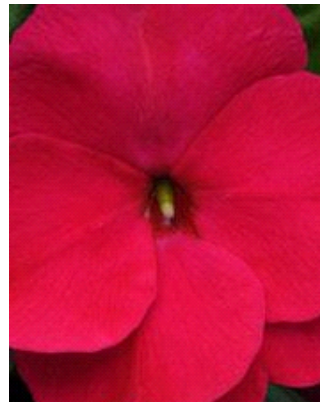
A

Breezy Red Tuberous
Begonia



B

Kong Jr.™ Green Halo
Coleus, Premium Shade



C

Divine™ Violet Improved
New Guinea Impatiens



D

SolarPower™ Lime
Ipomoea