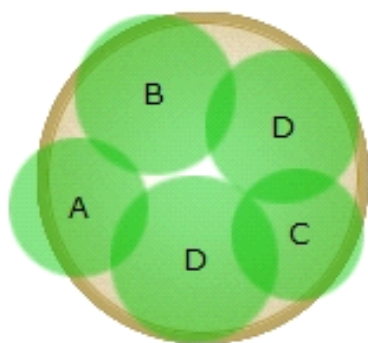


Elegant Shade

Bring soft texture and colorful flowers to your shade garden. Mix up begonia and impatiens on a large scale and add a bit of creeping greenery for a finishing touch.



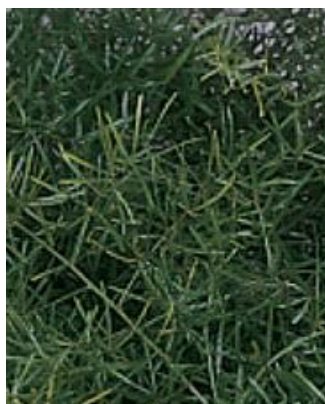
14-16 in.
container



Warm Season

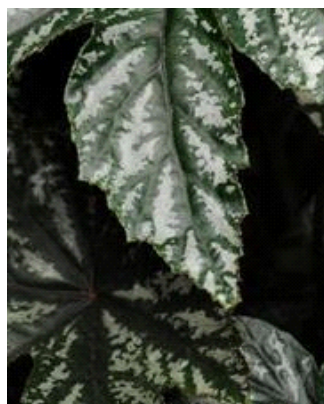


Plants in Container



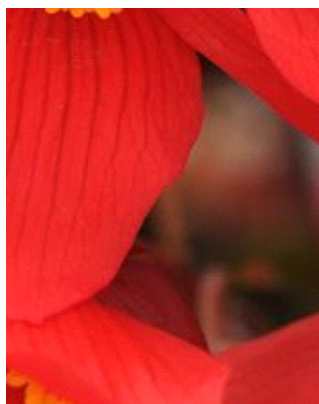
A

Sprenger's Asparagus



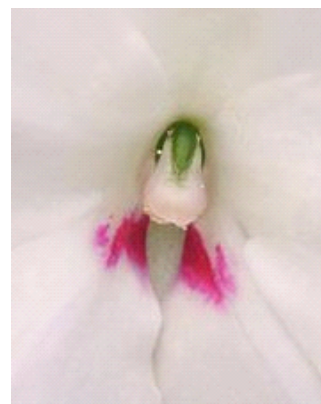
B

Gryphon Begonia



C

Mistral® Dark Red Begonia



D

Big Bounce™ White
Interspecific Impatiens