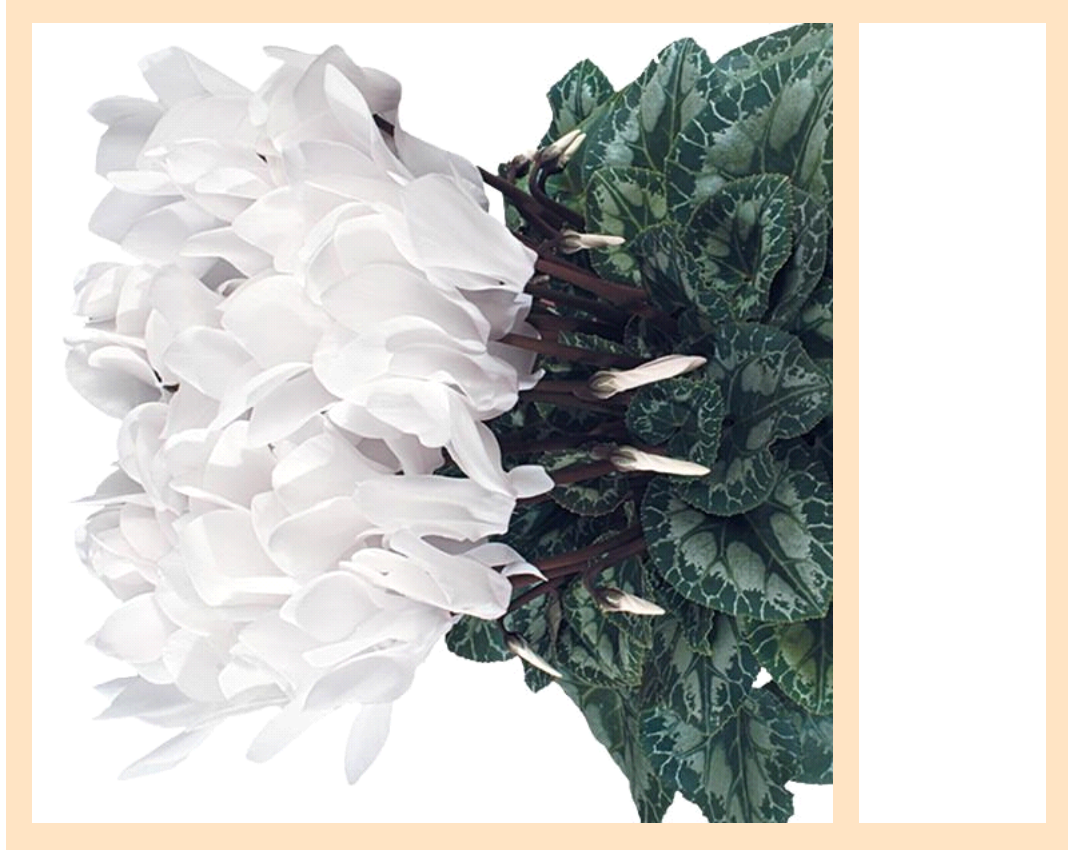


Cyclamen Latinia Success White



- Plant in Partial Sun 🌞 (at least 3 hrs of sun)
- Space 20-30cm apart
- Grows 20-30cm tall by 20-30cm wide
- Plant in fertile, well drained soil kept evenly moist. Suits 11-13cm pots

(Cut along dotted line for standard bench card size.)